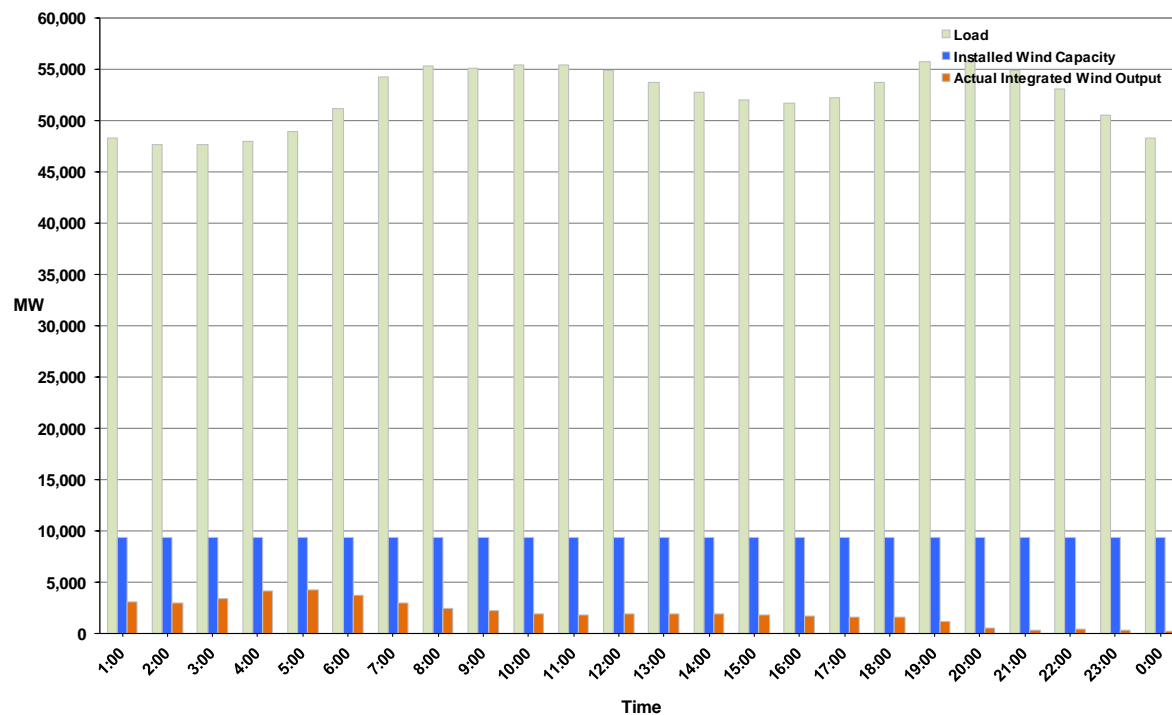




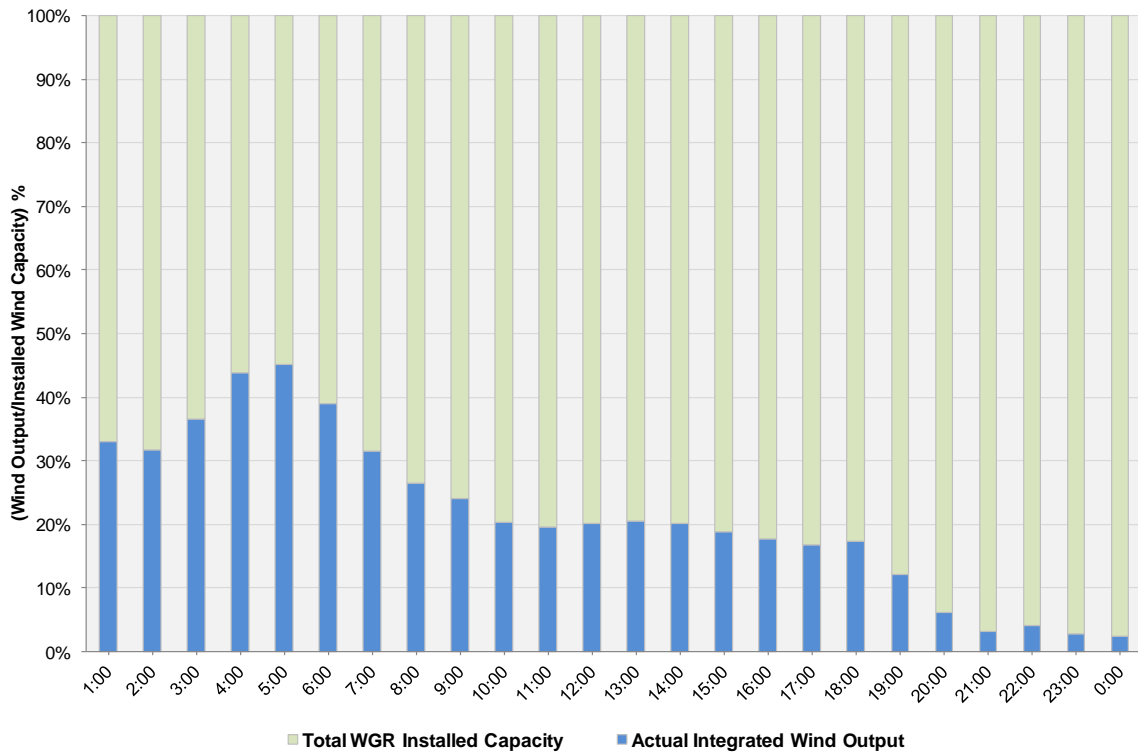
## ERCOT Grid Operations Wind Integration Report: 02/03/11

Peak Load	55,770 MW
Load Peak Hour	20
Wind Record 12/11/10	7,227 MW
Max Wind Value	4,381 MW
Wind Peak Hour	04:19:32
Wind Integration %	9.0

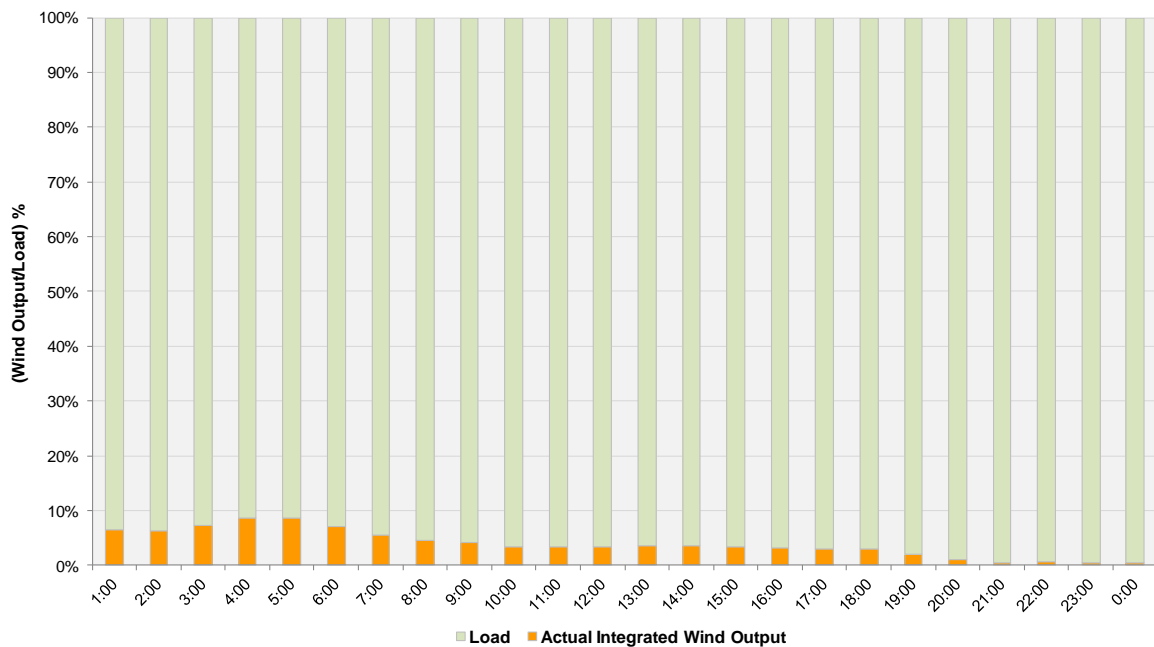
Hourly Average Actual Load vs. Actual Wind Output  
02-03-2011



**Actual Wind Output as a Percentage of the Total Installed Wind Capacity**  
**02-03-2011**



**Actual Wind Output as a Percentage of the ERCOT Load**  
**02-03-2011**



**ERCOT Load vs. Actual Wind Output 1/27/2011 - 2/3/2011**